



# THE ART OF GEORGIA IV:

*Imaging home; landscapes*



Exhibit Guide | Northeast Georgia | Georgia State Capitol

# THE ART OF GEORGIA IV:

*Imaging home; landscapes*

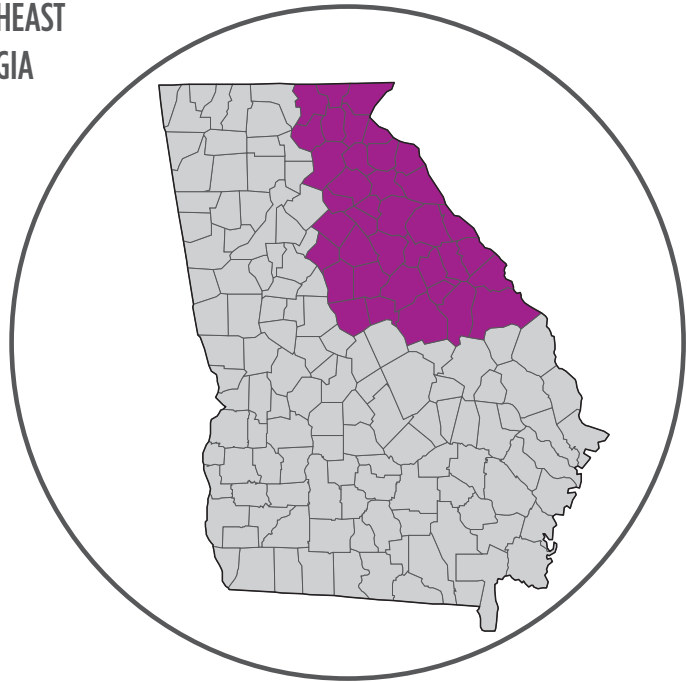


## ABOUT THE PROGRAM:

The Office of the Governor in partnership with Georgia Council for the Arts is pleased to announce the first call of Governor Kemp's Administration for The Art of Georgia IV: Imaging Home; Landscapes. Since 2012 Art of Georgia exhibits have displayed 354 works of art by 261 Georgia artists in the Office of the Governor at the State Capitol. In 2019, for the first time, the program has been expanded to include The Governor's Mansion.

The Art of Georgia IV: Imaging Home; Landscapes seeks to capture the diversity and uniqueness of communities and natural terrain throughout Georgia as seen, explored, and depicted through the artist's eye. Two-dimensional visual art, in a variety of media, exploring this theme will be considered. The exhibits, which will showcase current work of contemporary Georgia visual artists, will hang in the executive offices of the State Capitol and the Ballroom of the Governor's Mansion. Artwork will be sought and selected by region over a two-year time frame, with work from each region on display for approximately six-months. Three-dimensional work and film and video installations are not eligible. This is not a professional, juried competition. Pieces will be selected by Georgia Council for the Arts and the Office of the Governor. All decisions are final.

## NORTHEAST GEORGIA



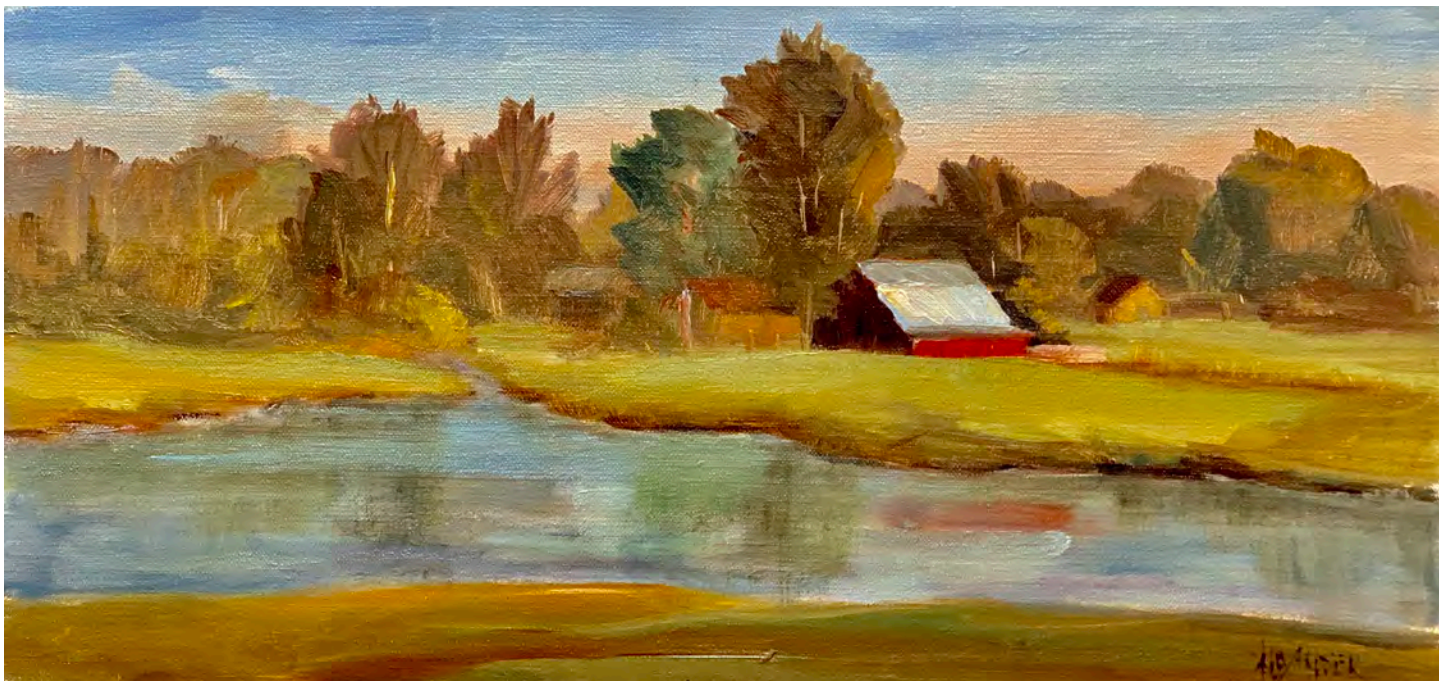
## ABOUT THIS EXHIBIT GUIDE:

Twenty-seven images by fifteen northeast Georgia artists were selected as part of The Art of Georgia IV: Imaging Home. The work portrayed on the following pages will be on display at the Georgia State Capitol through the end of April 2020. All work is for sale unless otherwise noted. Interested parties should contact the artist directly to handle purchase agreements. Contact information for each artist is provided on the following pages.



# THE ART OF GEORGIA IV:

*Imaging home; landscapes*



## FISH POND

Oil • 12 x 24

Ann Alexander | Gainesville, Hall County  
[gannalexander@bellsouth.net](mailto:gannalexander@bellsouth.net)



# THE ART OF GEORGIA IV:

*Imaging home; landscapes*



THE INDIAN MOUND

Oil • 11 x 14

Ann Alexander | Gainesville, Hall County  
gannalexander@bellsouth.net

# THE ART OF GEORGIA IV:

*Imaging home; landscapes*



## LAKE BURTON SUNSET

Photography • 13 x 19

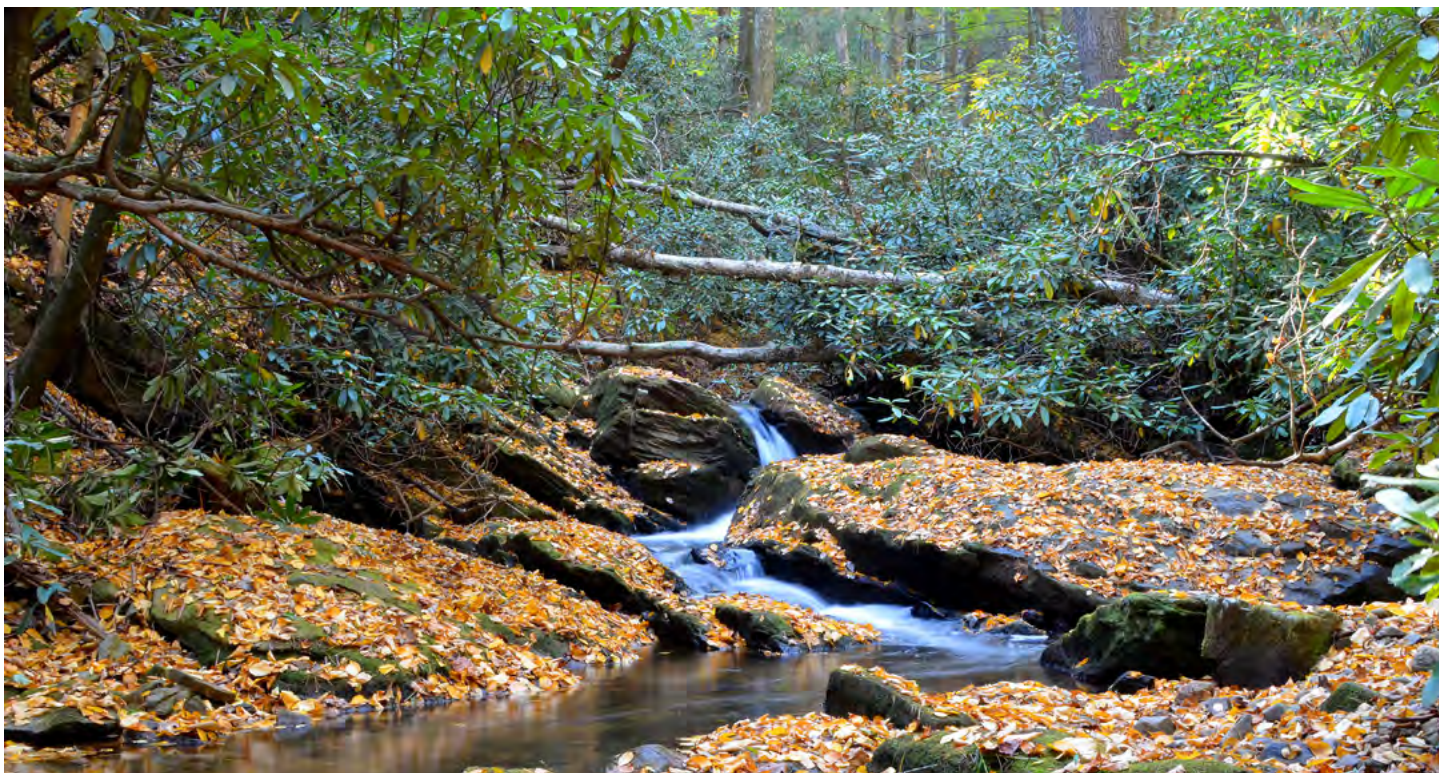
Michele Crawford | Clayton, Rabun

[crawfordartgallery@windstream.net](mailto:crawfordartgallery@windstream.net) | [michelecrawfordphotography.com](http://michelecrawfordphotography.com)



# THE ART OF GEORGIA IV:

*Imaging home; landscapes*



## WILDCAT CREEK AUTUMN

Photography • 13 x 19

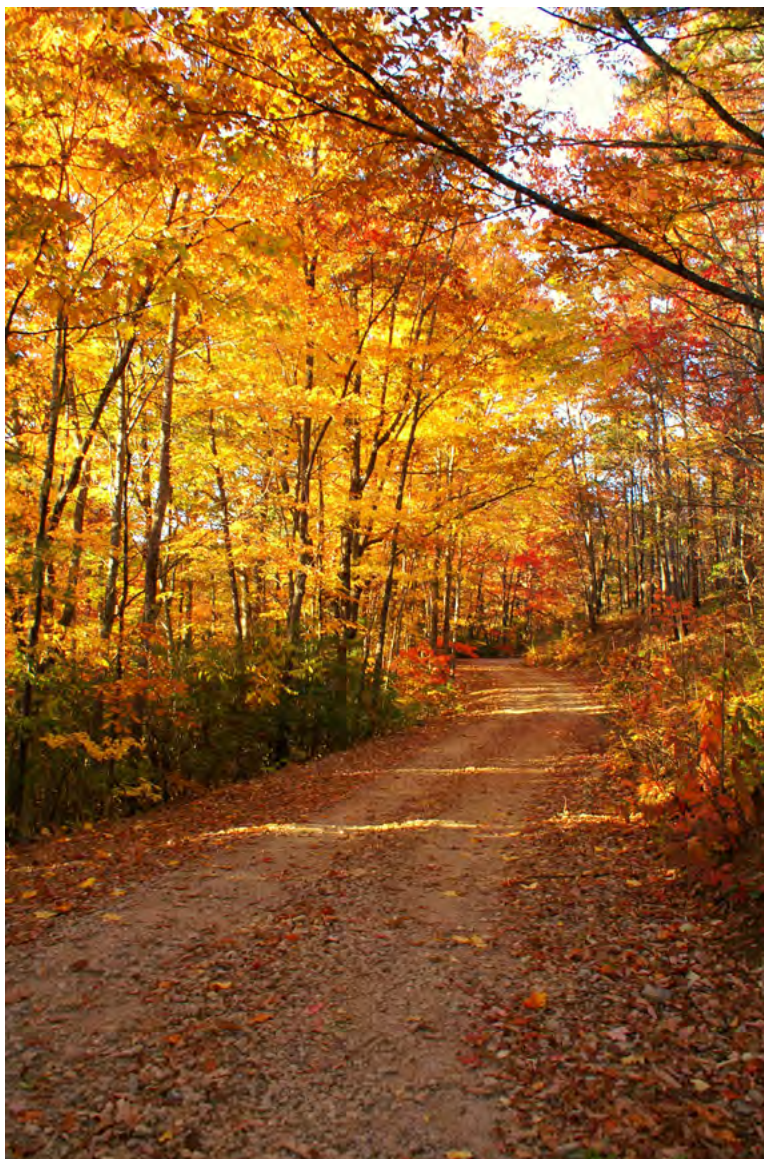
Michele Crawford | Clayton, Rabun

[crawfordartgallery@windstream.net](mailto:crawfordartgallery@windstream.net) | [michelecrawfordphotography.com](http://michelecrawfordphotography.com)



# THE ART OF GEORGIA IV:

*Imaging home; landscapes*



## AUTUNMDRIVE

Photography • 19 x 13

Michele Crawford | Clayton, Rabun

[crawfordartgallery@windstream.net](mailto:crawfordartgallery@windstream.net) | [michelecrawfordphotography.com](http://michelecrawfordphotography.com)

# THE ART OF GEORGIA IV:

*Imaging home; landscapes*



## NORTH BROAD TRESTLE

Photography • 36 x 36

Andrew Griner | Toccoa, Stephens  
andy.griner8@gmail.com | andygriner.com



# THE ART OF GEORGIA IV:

*Imaging home; landscapes*



**BY THE TRACKS IN MADISON, GA**  
Oil on panel • 8 x 10

Elise Hammond | Oxford, Newton  
[elisehammond@bellsouth.net](mailto:elisehammond@bellsouth.net)



# THE ART OF GEORGIA IV:

*Imaging home; landscapes*



## DREAMS OF MOUNTAINS IN BLUE

Oil on canvas • 16 x 20

Allie Jackson | Loganville, Walton  
[imkjac@gmail.com](mailto:imkjac@gmail.com) | [alliejacksonart.com](http://alliejacksonart.com)



# THE ART OF GEORGIA IV:

*Imaging home; landscapes*



FIRST AFRICAN AMERICAN CHURCH ON CUMBERLAND

Oil • 12 x 12

June Klement | Evans, Buford

[june@june-klement.com](mailto:june@june-klement.com) | [www.june-klement.com](http://www.june-klement.com)

# THE ART OF GEORGIA IV:

*Imaging home; landscapes*



**CUMBERLAND ISLAND PATH**

Oil • 14 x 11

**June Klement | Evans, Buford**

june@juneklement.com | [www.juneklement.com](http://www.juneklement.com)



# THE ART OF GEORGIA IV:

*Imaging home; landscapes*



STONEWALL PASTURE (LEXINGTON ROAD WASHINGTON, GA)  
Oil • 24 x 24

Olessia Maximenko | Washington, Wilkes  
[draculiska@gmail.com](mailto:draculiska@gmail.com) | [www.olessiamaximenko.com](http://www.olessiamaximenko.com)

# THE ART OF GEORGIA IV:

*Imaging home; landscapes*



BRICKHOUSE ROAD (CALLAWAY PLNT)

Oil • 30 x 40

Olessia Maximenko | Washington, Wilkes  
draculiska@gmail.com | [www.olessiamaximenko.com](http://www.olessiamaximenko.com)



# THE ART OF GEORGIA IV:

*Imaging home; landscapes*



## BEACHCOMBER

Watercolor • 8 x 10 (framed 19 x 23)

Frank McKay | Gainesville, Hall

[frankmckay@waterandword.com](mailto:frankmckay@waterandword.com) | [www.waterandword.com](http://www.waterandword.com)

# THE ART OF GEORGIA IV:

*Imaging home; landscapes*



## MORNING IN AUGUSTA

Oil on stretched Canvas • 24 x 12

Michael Meissner | Appling, Columbia  
michael@imountain.net



# THE ART OF GEORGIA IV:

*Imaging home; landscapes*



**TOBACCO BARN - COBBTOWN, GA**  
Oil on stretched Canvas • 24 x 12

Michael Meissner | Appling, Columbia  
[michael@imountain.net](mailto:michael@imountain.net)

# THE ART OF GEORGIA IV:

*Imaging home; landscapes*



## PHINIZY SWAMP AFTERNOON

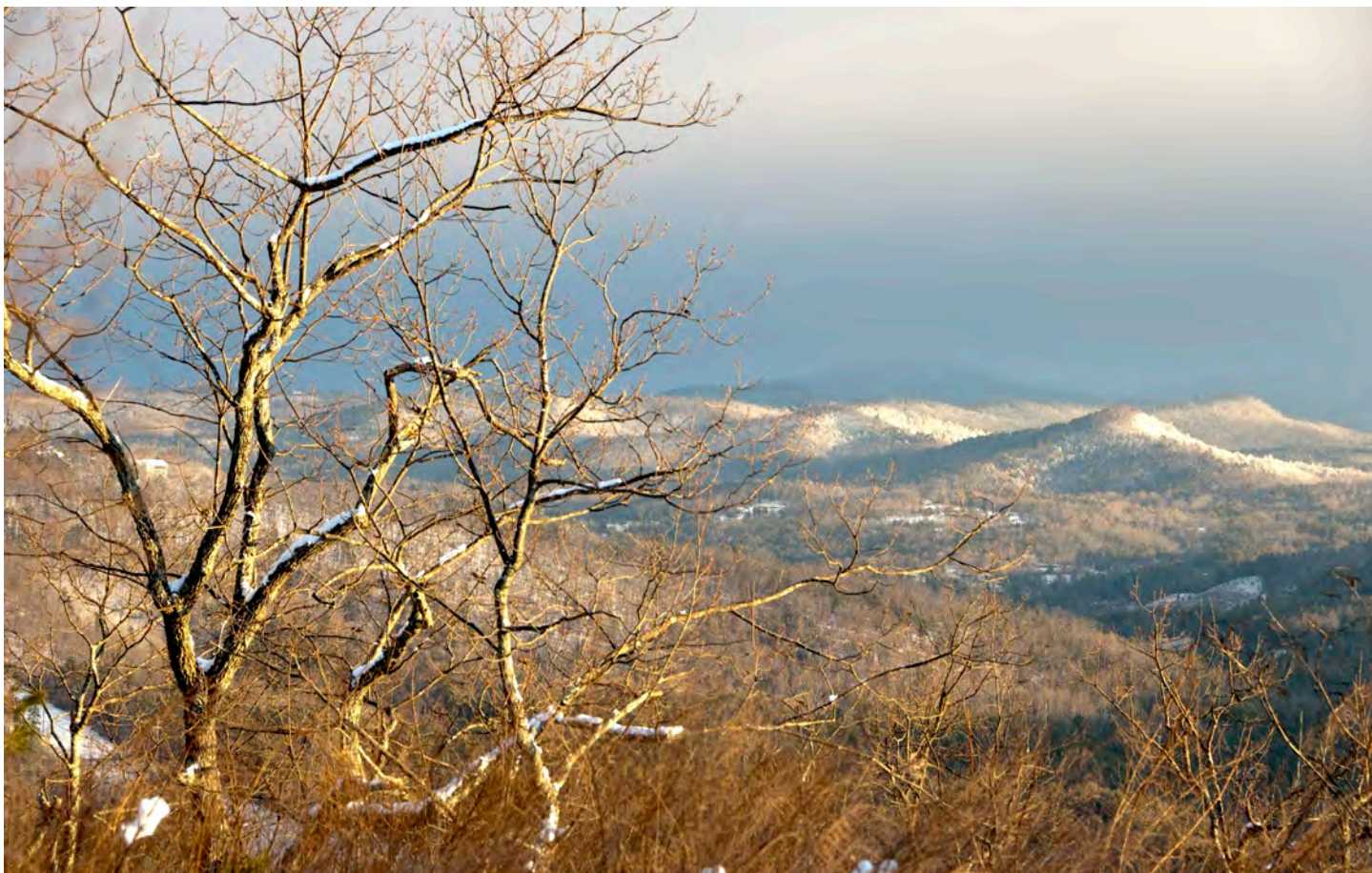
Photography • 10 X 15

Angela Minter | Augusta, Richmond  
a.minter2@yahoo.com



# THE ART OF GEORGIA IV:

*Imaging home: landscapes*



## TALLULAH SNOW

Photography • 33 x 23

Keith Nelms | Tallulah Falls, Rabun  
keith@knowbd.com

# THE ART OF GEORGIA IV:

*Imaging home; landscapes*



## TYBEE WAVES

Photography • 32 x 22 framed

Keith Nelms | Tallulah Falls, Rabun  
keith@knowbd.com



# THE ART OF GEORGIA IV:

*Imaging home; landscapes*



## MORNING MARSH

Photography • 26 x 33

Keith Nelms | Tallulah Falls, Rabun  
keith@knowbd.com

# THE ART OF GEORGIA IV:

*Imaging home; landscapes*



## SUTTON'S POND HOUSE, IRWIN COUNTY

Oil on Canvas • 24 x 36

Pam Thompson | Augusta, Richmond

[pamthompsonaug@gmail.com](mailto:pamthompsonaug@gmail.com) | [Pamthompsonart.com](http://Pamthompsonart.com)



# THE ART OF GEORGIA IV:

*Imaging home; landscapes*



## MARSH AT ST. SIMONS

Oil on Canvas • 18 x 24

Pam Thompson | Augusta, Richmond

[pamthompsonaug@gmail.com](mailto:pamthompsonaug@gmail.com) | [Pamthompsonart.com](http://Pamthompsonart.com)

# THE ART OF GEORGIA IV:

*Imaging home; landscapes*



## FARM LIFE: THE PATRIOT

Oil on Canvas • 11 x 14

Pam Thompson | Augusta, Richmond  
pamthompsonaug@gmail.com | Pamthompsonart.com



# THE ART OF GEORGIA IV:

*Imaging home; landscapes*



## BREAKFAST AT DAWN

Oil • 24 x 36

Sam Traina | Mansfield, Newton  
samtrainaart@bellsouth.net | samtraina.com

# THE ART OF GEORGIA IV:

*Imaging home; landscapes*



**OLD MADISON DEPOT MADISON GA**

Oil • 18 x 24

**Sam Traina | Mansfield, Newton**  
samtrainaart@bellsouth.net | samtraina.com



# THE ART OF GEORGIA IV:

*Imaging home; landscapes*



R.R. CROSSING AT UNION POINT, GA  
Oil • 18 x 24

Sam Traina | Mansfield, Newton  
[samtrainaart@bellsouth.net](mailto:samtrainaart@bellsouth.net) | [samtraina.com](http://samtraina.com)

# THE ART OF GEORGIA IV:

*Imaging home; landscapes*



## HAY THERE (EATONTON FARMLAND)

Acrylic • 36-3/4 x 36-3/4 framed

Sandra Witty | Eatonton, Putnam

sandrawitty1@gmail.com | sandrawitty.com



# THE ART OF GEORGIA IV:

*Imaging home; landscapes*



## SNOW HOME

Acrylic on Canvas • 36 x 24 • Not For Sale

Don Yaun | Buford, Hall

[don@donyaunart.com](mailto:don@donyaunart.com) | [donyaunart.com](http://donyaunart.com)