



The Art of Georgia II: Portraits of a Community

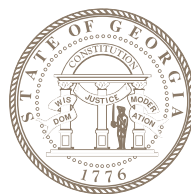


Exhibit Guide | Northeast Georgia



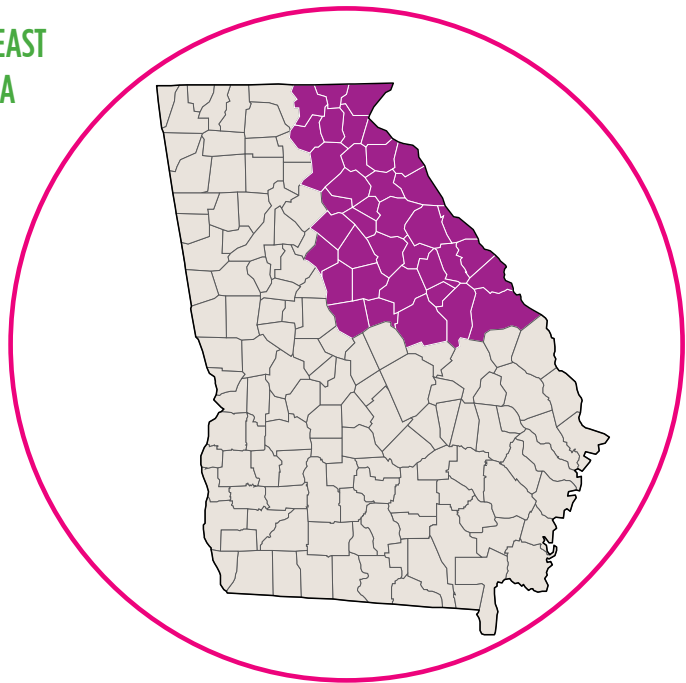
The Art of Georgia II: Portraits of a Community

ABOUT THE PROGRAM:

The Office of the Governor in partnership with Georgia Council for the Arts is pleased to announce a call for entries for *The Art of Georgia II: Portraits of a Community*. This second iteration of the exhibit follows the inaugural *Art of Georgia: Celebrating Georgia's Landscapes and People* which exhibited 133 works by 95 Georgia artists over a two-year period from 2012-2014.

The Art of Georgia II: Portraits of a Community seeks to capture the uniqueness of communities throughout Georgia as seen, explored, and depicted through the artist's eye. Two-dimensional visual art, in a variety of media, exploring this theme will be considered. The exhibit will hang in the executive offices of the State Capitol and showcase current work of contemporary Georgia visual artists. Artwork will be sought and selected by region over a two-year time frame, with work from each region on display for approximately six-months. Three-dimensional work and film and video installations are not eligible. This is not a professional, juried competition. Pieces will be selected by Georgia Council for the Arts and the Office of the Governor. All decisions are final.

NORTHEAST GEORGIA



ABOUT THIS EXHIBIT GUIDE:

Thirty-three images by twenty-three northeast Georgia artists were selected as part of *The Art of Georgia II: Portraits of a Community*. The work, portrayed on the following pages, will be on display at the Georgia State Capitol through the end of September 2015. All work is for sale unless otherwise noted. Interested parties should contact the artist directly to handle purchase agreements. Contact information for each artist is provided on the following pages.

The Art of Georgia II: Portraits of a Community



HAROLD, MY PLEIN-AIRE FRIEND (2014)

watercolor on paper • 14.5 x 11

Viviane Van Giesen | Watkinsville

vangiesen12@me.com

www.arteviviane.com

The Art of Georgia II: Portraits of a Community



CHOESTOE (LAND OF THE DANCING RABBITS) (2013)

oil painting • 20 x 16

Judy Black | Gainesville

jabart711@bellsouth.net

www.judyblackfineart.com

The Art of Georgia II: Portraits of a Community



ADAIR'S MILL (2013)

oil painting • 24 x 18

Judy Black | Gainesville

jabart711@bellsouth.net

www.judyblackfineart.com

The Art of Georgia II: Portraits of a Community



IN THE SHADOW OF WAUDA MOUNTAIN (2014)

oil painting • 20 X 16

Judy Black | Gainesville

jabart711@bellsouth.net

www.judyblackfineart.com

The Art of Georgia II: Portraits of a Community



WALKING IN THE RAIN

oil painting • 24 x 18

Jill Haack | Gainesville

jillhaack@bellsouth.net

The Art of Georgia II: Portraits of a Community



DISTANT VIEW (2015)
oil on linen • 48 x 36

Libby Mathews | Lakemont
libbymathews@windstream.net
www.libbymathews.com

The Art of Georgia II: Portraits of a Community



TRILLIUM FOREST (2015)

oil on canvas • 40 x 40

Libby Mathews | Lakemont

libbymathews@windstream.net

www.libbymathews.com

The Art of Georgia II: Portraits of a Community



GEORGIA ON DISPLAY (2014)

pastel • 24 x 18

David B. Turner | Clarkesville
davidbturner@windstream.net

The Art of Georgia II: Portraits of a Community



CHEROKEE ROSE (2011)

pen & ink and watercolor • 37 x 29

David B. Turner | Clarkesville

davidbturner@windstream.net

The Art of Georgia II: Portraits of a Community



WILBANKS MILL, RABUN COUNTY, GA (2007)
watercolor • 28 x 21

John W. Boozer | Habersham
jwbpsb@windstream.net
www.boozerart.com/index.htm

The Art of Georgia II: Portraits of a Community



ANGELINA ROCK, STATE 3 (2015)

watercolor • 28.5 x 36

John W. Boozer | Habersham

jwbpsb@windstream.net

www.boozerart.com/index.htm

The Art of Georgia II: Portraits of a Community

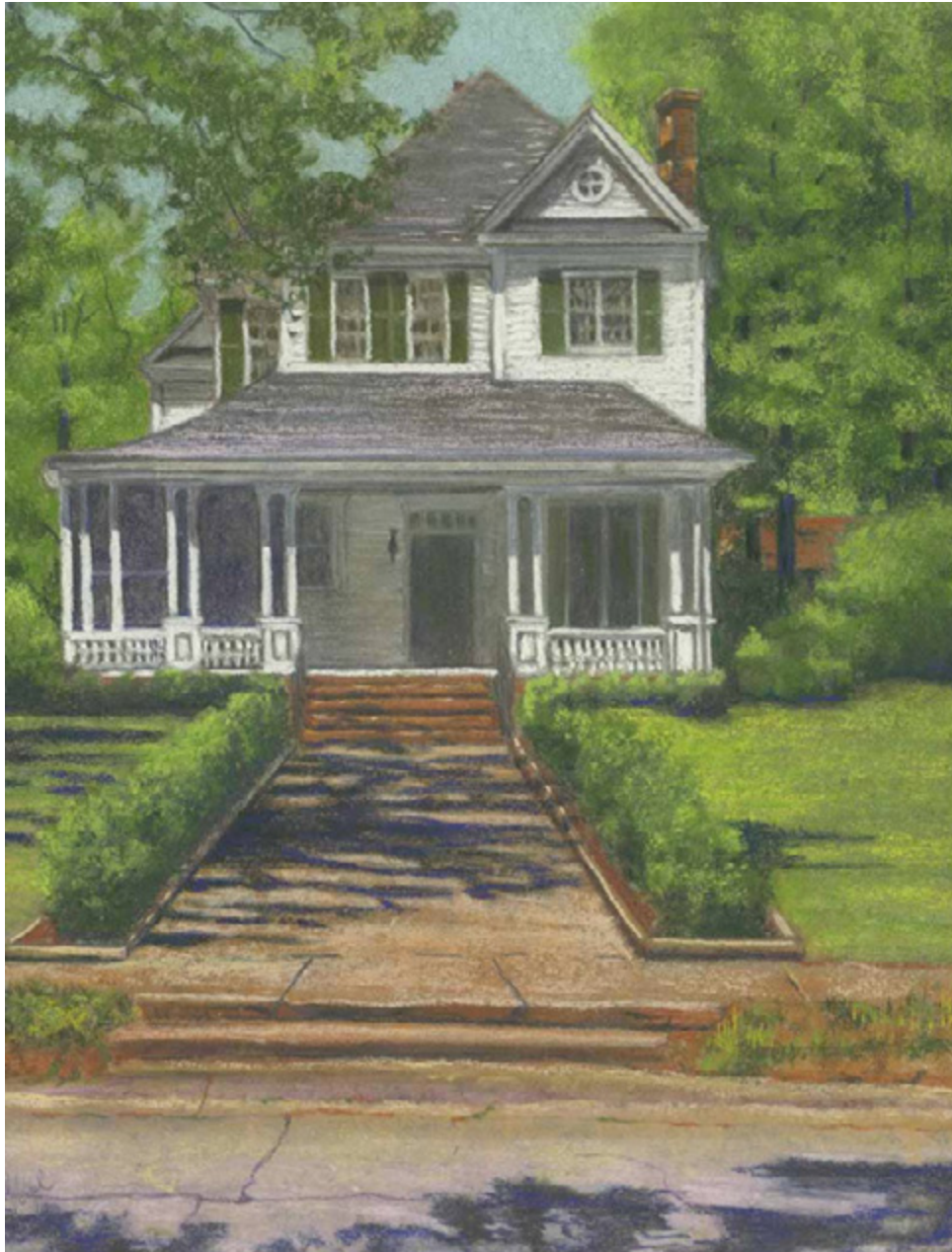


CALLAWAY REFLECTIONS (2014)

watercolor • 20.5 x 17

Mary Ellen Vogel | Oxford
maryellenvogel@gmail.com

The Art of Georgia II: Portraits of a Community



205 JACKSON STREET (2014)

pastel • 20.5 X 17

Mary Ellen Vogel | Oxford
maryellenvogel@gmail.com

The Art of Georgia II: Portraits of a Community



MAJESTIC SPRING IN GEORGIA (2014)

oil on canvas • 20 x 16

Judith Buckley | Athens

buckleyjk15@gmail.com

<https://sites.google.com/site/judithkbuckleyartist/>

The Art of Georgia II: Portraits of a Community



BOONY'S SNOW DAY (2014)

acrylic in on fabric • 25 x 20

Jacalyn Shamblee | Hartwell

jshamblee@hartcom.net

www.curraheearr.com/Jacalyn-Shamblee.html

The Art of Georgia II: Portraits of a Community



TIGER MOUNTAIN BUD BREAK (2011)

color photograph • 38 x 22

Peter McIntosh | Clayton

petermac@windstream.net

www.mcintoshmountains.com

The Art of Georgia II: Portraits of a Community



TALLULAH GORGE BOATERS (2009)

color photograph • 38 x 22

Peter McIntosh | Clayton

petermac@windstream.net

www.mcintoshmountains.com

The Art of Georgia II: Portraits of a Community



TALLULAH IN OCTOBER (2012)

color photograph • 36 x 20

Peter McIntosh | Clayton

petermac@windstream.net

www.mcintoshmountains.com

The Art of Georgia II: Portraits of a Community



THE CALL (2015)

acrylic • 23 x 18

Robert Clements | Athens
rclements1@charter.net
www.robertclementsart.com

The Art of Georgia II: Portraits of a Community



LETTER ABOUT THE FUTURE

watercolor and gouache • 20 x 24

Robert Clements | Athens

rclements1@charter.net

www.robertclementsart.com

The Art of Georgia II: Portraits of a Community



GOLDEN SUNRISE ON BRASSTOWN BALD (2013)

digital photography • 24 x 18

Lynn Satterfield | Dahlonega

lrpgls399@yahoo.com

www.forestlightphoto.com

The Art of Georgia II: Portraits of a Community



FOREST FAMILY---WOOD THRUSH (2010)

digital photography • 24 x 18

Randall Pinson | Dahlonega

lrpgls399@yahoo.com

www.forestlightphoto.com

The Art of Georgia II: Portraits of a Community



KAYAKING ON LAKE LANIER (2010)

oil painting • 36 x 24

Susan White | Gainesville

susanmarye@gmail.com

The Art of Georgia II: Portraits of a Community



SUNSET ON BARN (2015)

oil painting • 20 x 16

Cindy Walker | Monticello

ecwalker76@yahoo.com

www.ArtInMyHeart.biz

The Art of Georgia II: Portraits of a Community



FRIENDSHIP BAPTIST CHURCH, TOCCOA, GA (2012)
photography

Steph Maley | Toccoa
steph.maley@gmail.com
www.lov2shoot.com

The Art of Georgia II: Portraits of a Community



LA MADRUGADA DE DAHLONEGA GA (2014)

(The Dawn of Dahlonega, GA)

photography • 24 x 18

Christina Packard | Dahlonega

ke4fej1@windstream.net

www.facebook.com/ChristianPackardArt

The Art of Georgia II: Portraits of a Community



COASTAL COLOR (2012)

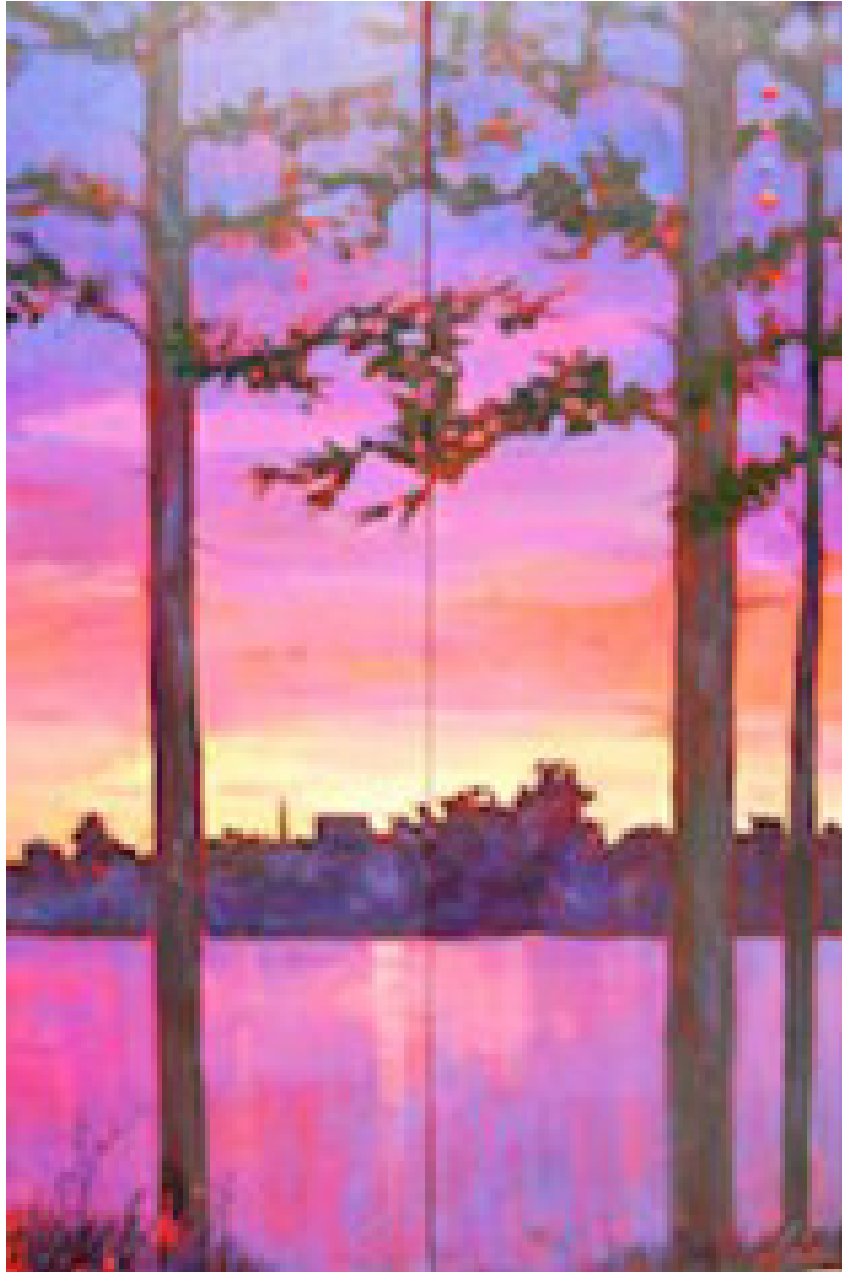
acrylic on canvas • 12 x 36

Lucy H. Weigle | Augusta

lweigleart@comcast.net

www.lucyweigle.com

The Art of Georgia II: Portraits of a Community



SAVANNAH RIVER SUNSET (2012)

acrylic on canvas • 24 x 36

Lucy H. Weigle | Augusta

lweigleart@comcast.net

www.lucyweigle.com

The Art of Georgia II: Portraits of a Community



CANNAS NEAR AMICALOLA FALLS (2010)

oil • 20 x 24

Ann Alexander | Gainesville
gannalexander@bellsouth.net

The Art of Georgia II: Portraits of a Community



IN THE DENTON FALLS POOL (2015)

copper repousse • 16 x 22

Dietrich Hoecht | Clayton

potsniron@windstream.net

www.northgeorgiaartsguild.com/gallery/NGAG_gallery.php?g2_itemId=54

The Art of Georgia II: Portraits of a Community



AMICALOLA POOL (2011)

photography • 18 x 22

Liz Johnson | Athens

lizmjohnson@charter.net

www.lizminkertjohnson.com

The Art of Georgia II: Portraits of a Community



IN THE VALLEY OF THE LITTLE TENNESSEE (2002)

oil on canvas • 28 x 36

Laurence Holden | Clayton

laurenceholden@windstream.net

laurenceholden.info

artistspath.info

The Art of Georgia II: Portraits of a Community



MORNING LIGHT (2014)

watercolor • 18 x 22

Oscar Rayneri | Dahlonega

orayneri@windstream.net

oscarayneriart.yolasite.com