

About Georgia's State Art Collection

Georgia's State Art Collection comprises hundreds of art pieces collected over nearly three decades by the Georgia Council for the Arts in the late twentieth century. The collection incorporates a diversity of media, including etchings and drawings, jewelry, mixed media, paintings, photographs, pottery, sculptures, textiles, and wooden bowls and toys. The works range from the abstract to the realistic, with the latter often depicting landscapes and people in Georgia and beyond. Some of the artwork is formal, produced by artists trained in the nation's top schools, while other pieces are the creations of folk and outsider artists, often working in the communities where they were born and raised. While many of the artists are native Georgians, others spent only a brief time in the state, teaching at universities or art schools and exhibiting in museums and galleries.

The story of the collection begins in the late 1960s, when the Georgia Council for the Arts launched the Georgia Art Bus Program, sending a bus transformed into a traveling exhibition space to venues around the state. Several years later the Georgia General Assembly created the Art Acquisition Program to purchase works created by artists in Georgia. Each year a panel of expert judges met to recommend acquisitions, and eventually the collection grew to more than 600 pieces.

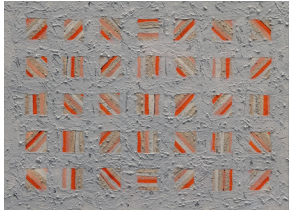
Though the Art Bus program ended decades ago, the intent to bring original works of art by Georgia artists to people throughout the state has endured. It is in this vein that we have placed works from the State Art Collection throughout SGMC Berrien Campus. We hope that you might take a moment with these works of art, and enjoy an introduction to some of the immense talent that our state has nurtured.



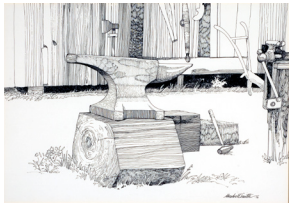
THIS EXHIBIT IS SPONSORED BY



Patient Hallways



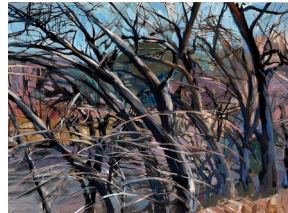
David Eugene Henry
Earth Grid XVII (1979)
Mixed Media
10 in x 13 in



Marshall Smith
The Anvil (1988)
Ink
13 1/2 in x 19 in



Gena Spivey
City Tree (1988)
Casein on Paper
50 in x 38 in



Gena Spivey
Toccoa, on the River
Casein on Paper
22 in x 30 in



Paige H. Harvey
Call: Rallus Longirostris (1982)
Acrylic
22 1/2 in x 30 in

Cardiology Waiting Area



Philip Carpenter
Union Made (1983)
Oil
29 in x 20 in



James Frazer
View Behind a Filling Station Off I-16, Middle Georgia (1973)
Hand Colored Photograph
18 in x 24 in

Lab Draw Hallway



Alan Lease
Trees in Fog - Chastain Park (1982)
Photograph
16 in x 20 1/4 in

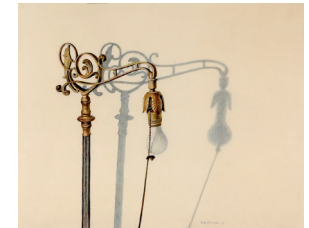


James McRae
Shapes and Sky
Acrylic
30 in x 27 1/2 in

Radiology/Mammography Waiting



Lisa Irwin
Chair and Window
Photograph
13 in x 18 1/2 in

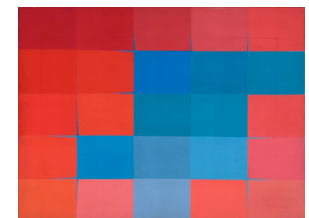


Keith Rasmussen
Camp 1974
Pencil
22 1/2 in x 28 1/4 in

X-Ray Hallway



Zachariah Anderson
Unity of Man (1977)
Acrylic
40 in x 34 in



Shirley Cooper
Reverse Design, Red-Blue (1978)
Acrylic
30 in x 40 in